

The U.S. Census Bureau's Diverse, Expanding International Subnational Data Resources

Joshua Comenetz, Ph.D.

International Programs Center
U.S. Census Bureau

AAG annual meeting, Honolulu, April 2024



U.S. Department of Commerce
Economics and Statistics Administration
U.S. CENSUS BUREAU
[census.gov](https://www.census.gov)

This presentation is released to inform interested parties of ongoing research and to encourage discussion of work in progress. Any views expressed are those of the author and not necessarily those of the U.S. Census Bureau.

International Mapping at the Census Bureau

Global mapping linked to population, housing, and agricultural data

Mapping by administrative areas (ADMs) and 100-meter grid cells

Free, online data products for 60 countries on 3 websites

- 20 countries new or updated in past year
- Additional countries in 2024

Global Population Mapping

Subnational administrative and statistical areas:
millions of polygons

Controls:

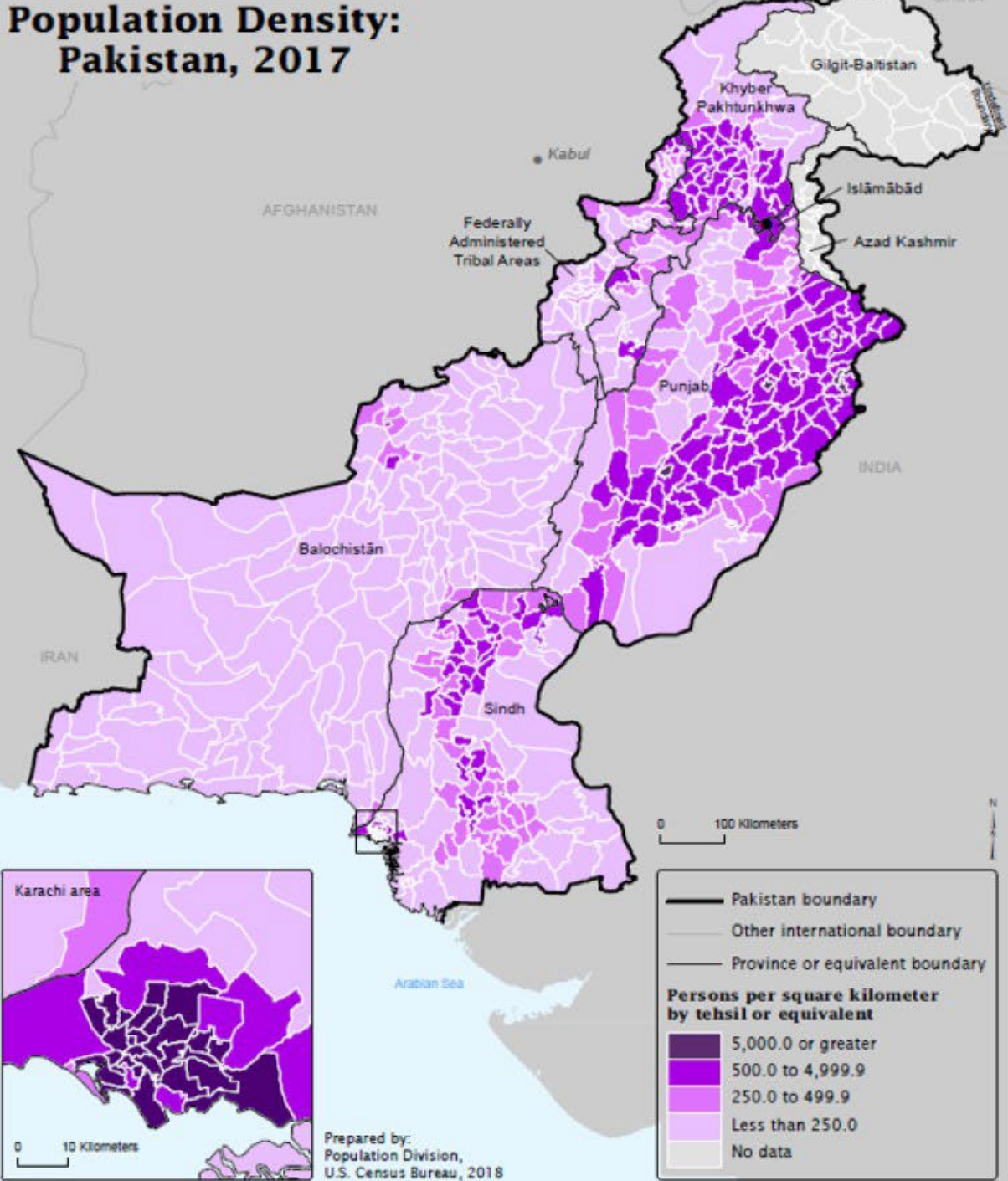
Large Scale International Boundaries dataset
(U.S. State Department)

National census data

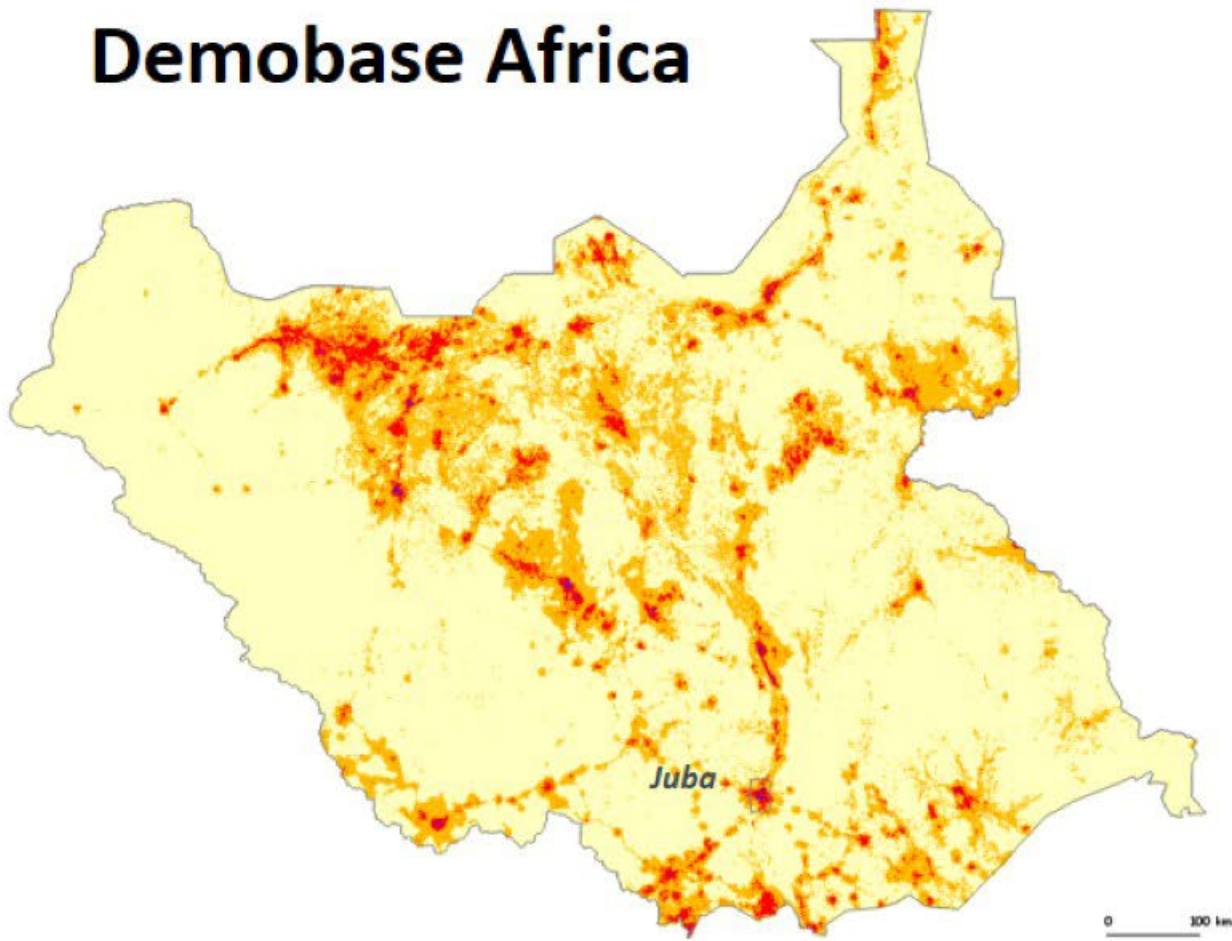
Census Bureau International Database national
population estimates



U.S. Department of Commerce
Economics and Statistics Administration
U.S. CENSUS BUREAU
[census.gov](https://www.census.gov)



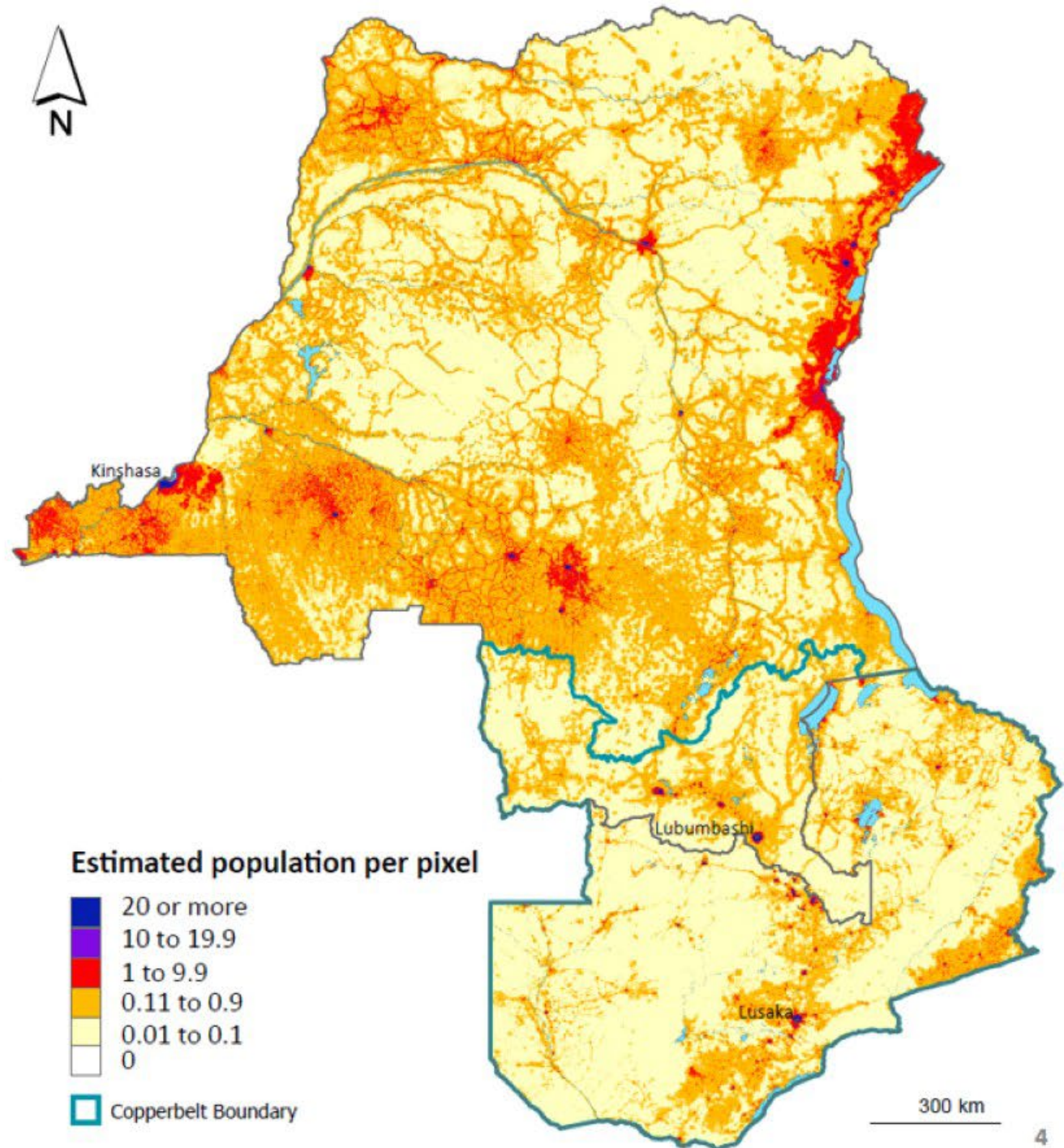
Demobase Africa



**In progress:
Angola, Namibia**



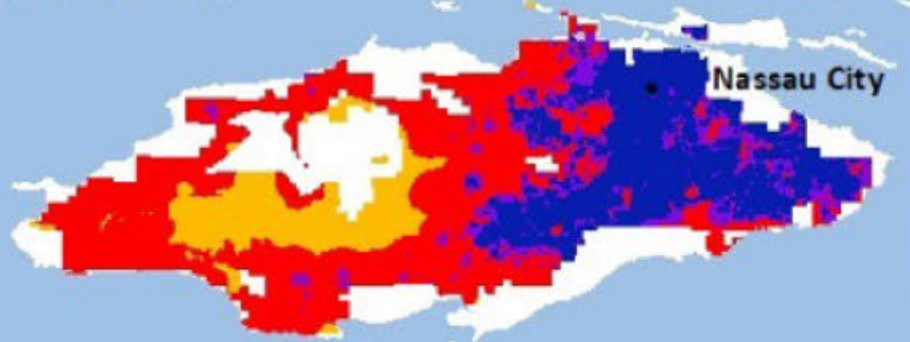
U.S. Department of Commerce
Economics and Statistics Administration
U.S. CENSUS BUREAU
[census.gov](https://www.census.gov)



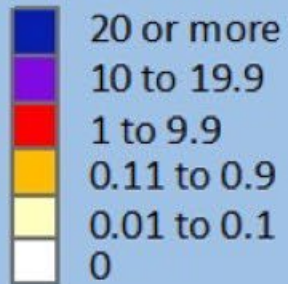
Demobase Caribbean

The Bahamas

New Providence



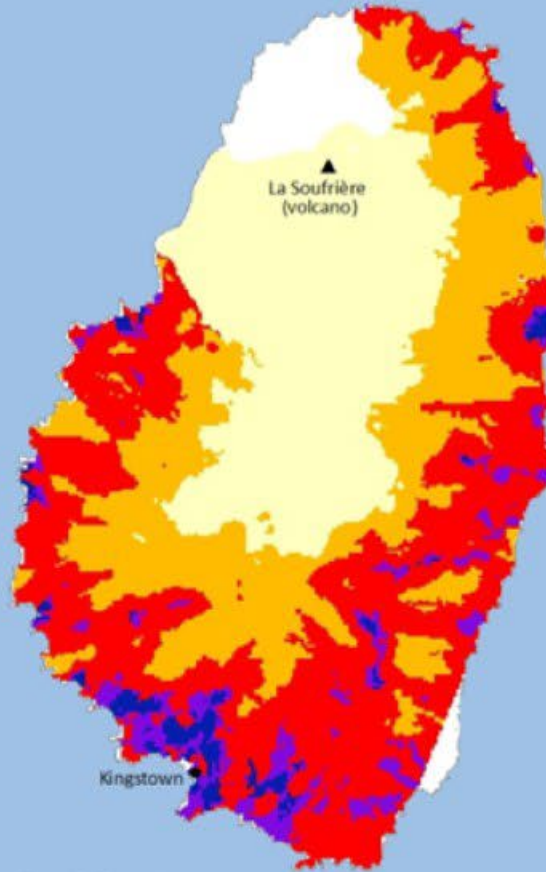
Estimated population per pixel



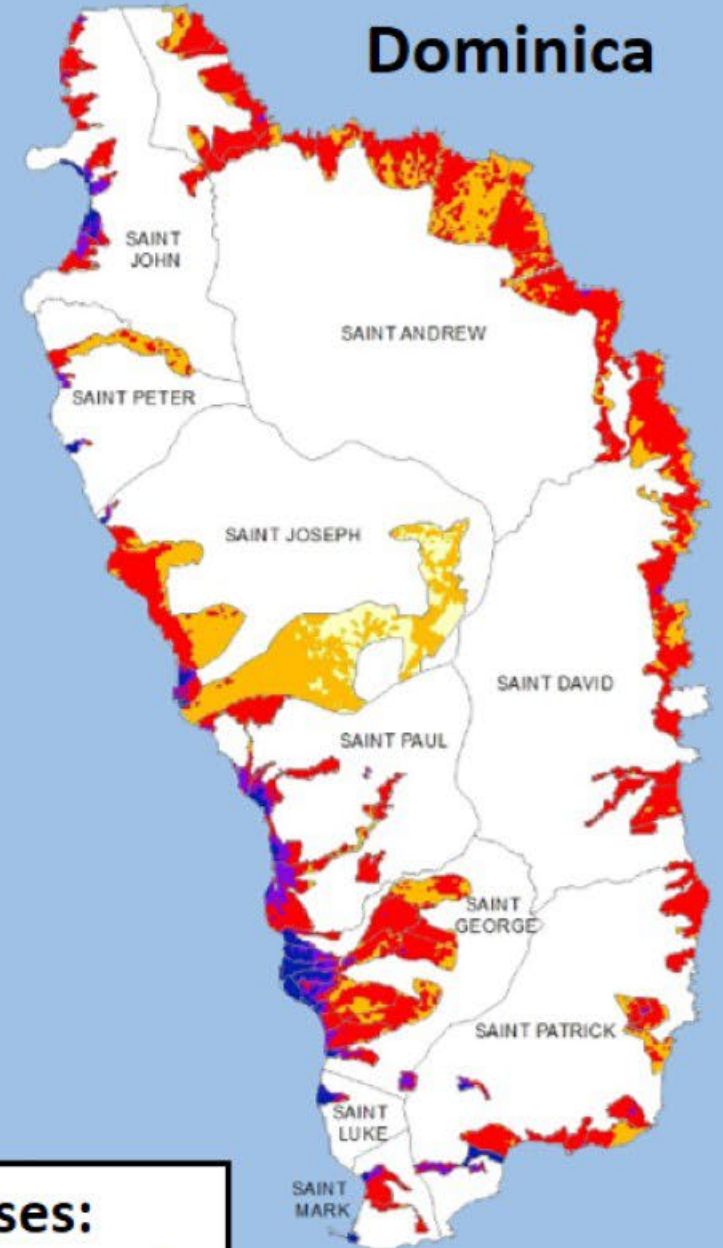
United States
Census
Bureau

U.S. Department of Commerce
Economics and Statistics Administration
U.S. CENSUS BUREAU
[census.gov](https://www.census.gov)

Saint Vincent and the Grenadines



Dominica



Earlier releases:
Haiti, Pakistan, Rwanda

Subnational Boundaries and Population Data

Prepared for the public and:

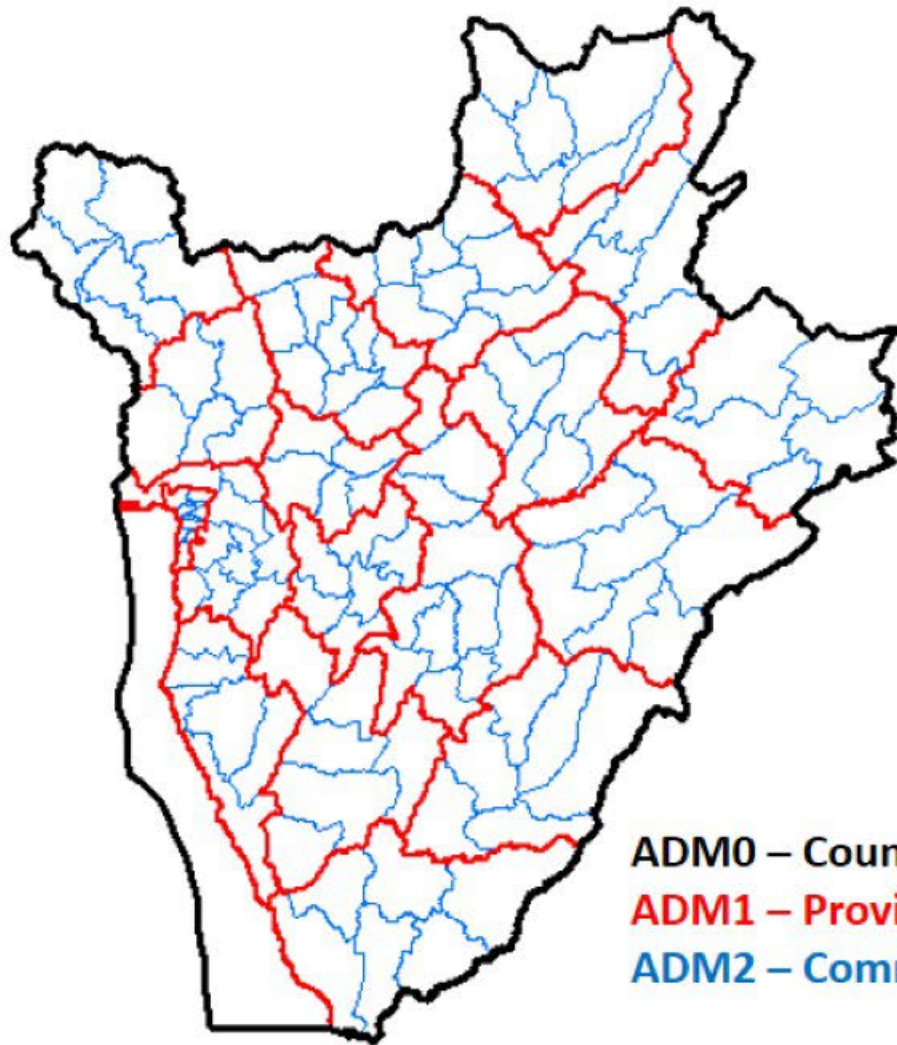
- U.S. President's Emergency Plan for AIDS Relief (PEPFAR)
- U.S. Agency for International Development

Variables

Examples

Total population	Age/sex in 5-year bands
Population	Language spoken, disability status
Housing	Access to utilities, roof material
Agriculture	Crops harvested

Sample Boundaries and Data



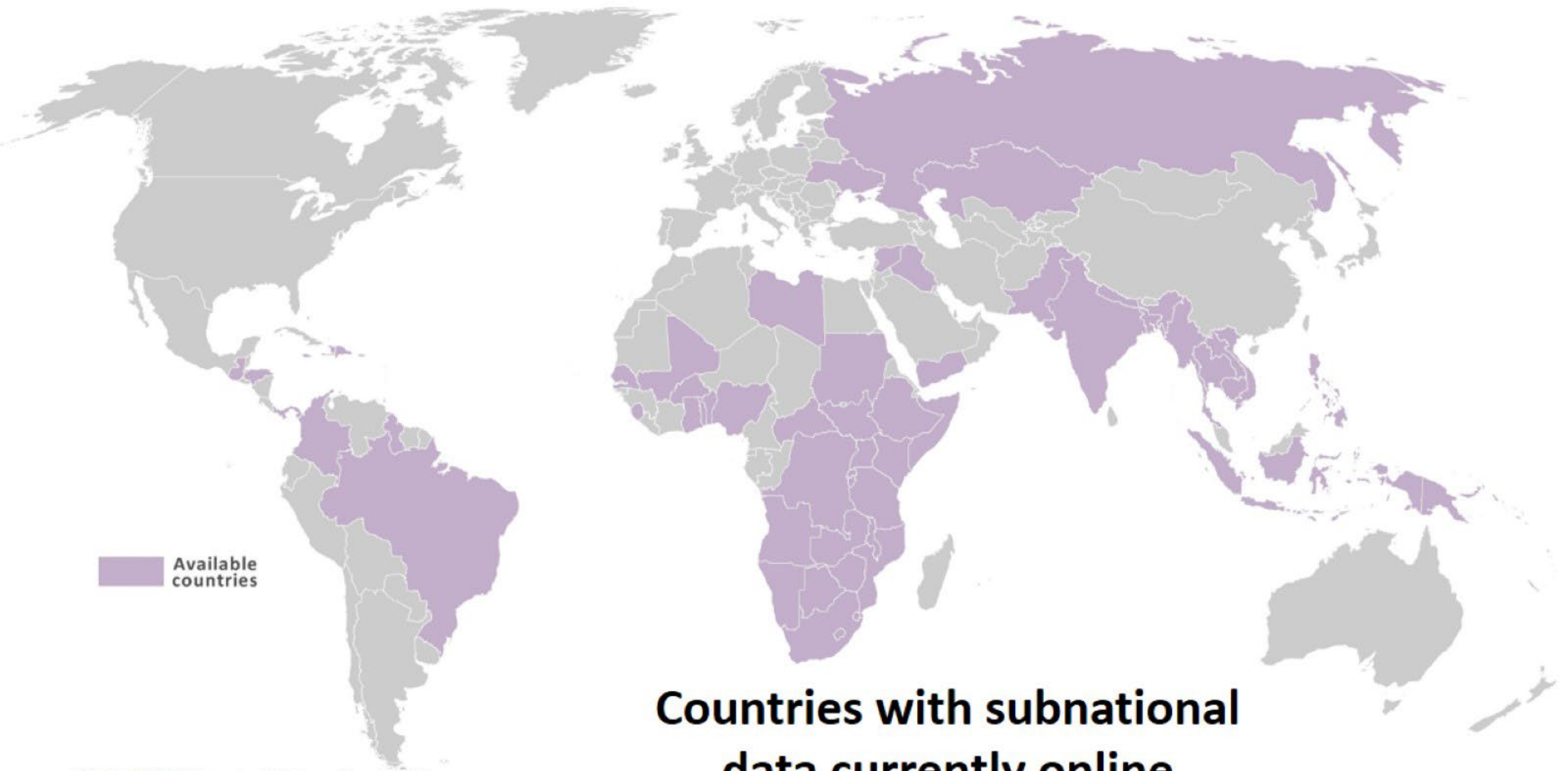
Burundi

ADM0 – Country
 ADM1 – Provinces
 ADM2 – Communes

CNTRY_NAME	ADM1_NAME	ADM2_NAME	ADM_LEVEL	BTOTL_2020
BURUNDI			0	12,631,974
BURUNDI	BUBANZA		1	519,112
BURUNDI	BUBANZA	BUBANZA	2	123,697
BURUNDI	BUBANZA	GIHANGA	2	90,376
BURUNDI	BUBANZA	MPANDA	2	99,503
BURUNDI	BUBANZA	MUSIGATI	2	120,857
BURUNDI	BUBANZA	RUGAZI	2	84,679
BURUNDI	BUJUMBURA MAIRIE		1	1,003,408
BURUNDI	BUJUMBURA MAIRIE	BUTERERE	2	70,006
BURUNDI	BUJUMBURA MAIRIE	BUYENZI	2	78,549

Table from Burundi public data product prepared for PEPFAR

U.S. ADMs
 ADM1 = states
 ADM2 = counties or equivalents



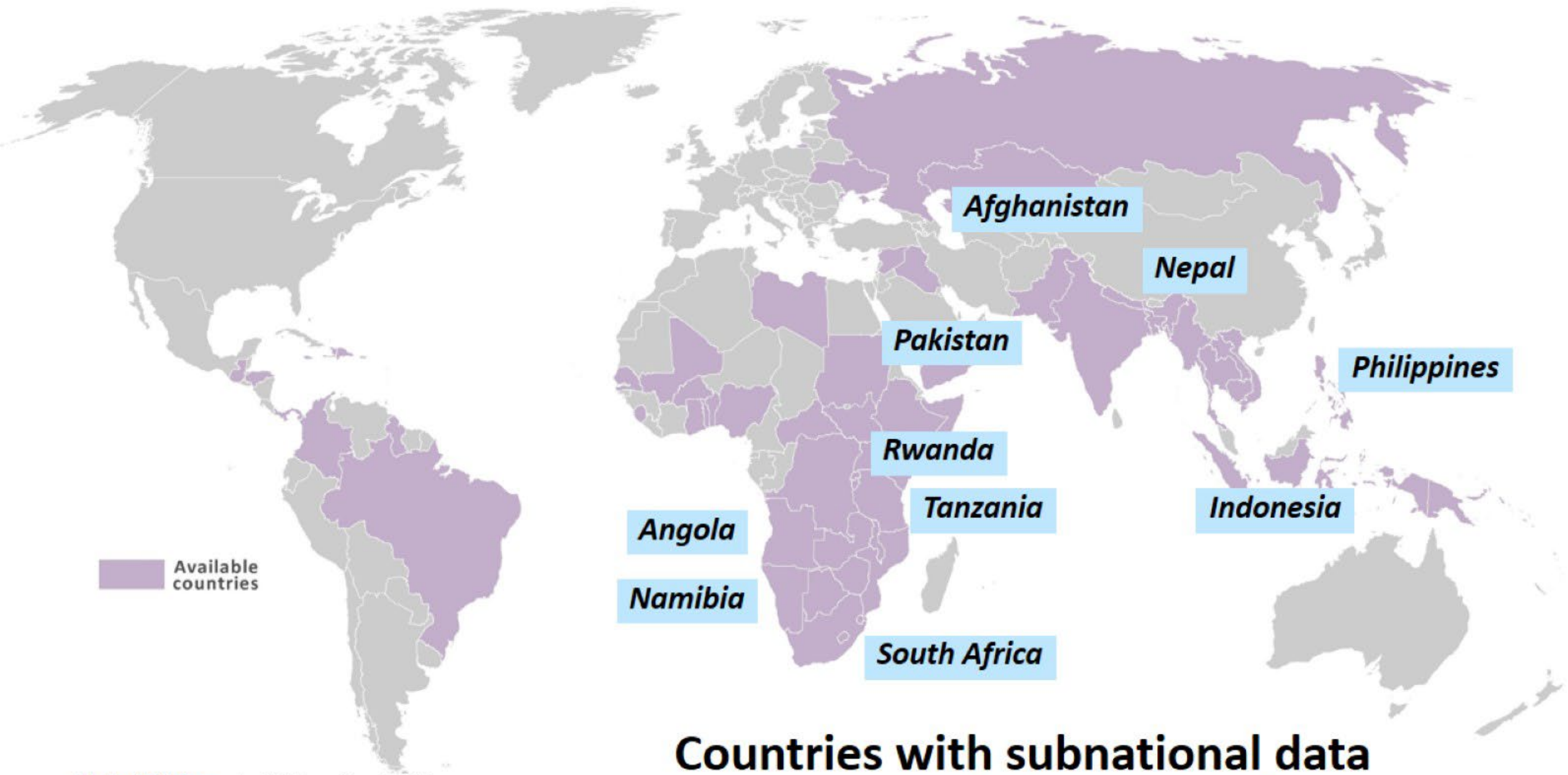
Countries with subnational data currently online



U.S. Department of Commerce
Economics and Statistics Administration
U.S. CENSUS BUREAU
[census.gov](https://www.census.gov)



Countries with recently released subnational data sets



Countries with subnational data sets currently in preparation

Questions or comments?

Joshua.Comenetz@census.gov

Accessing Data

Census.gov **PC:** [Census.gov/InternationalPrograms](https://www.census.gov/InternationalPrograms), *click on* Global Population Mapping
Mobile: [Census.gov](https://www.census.gov), *search for* Global Mapping

HDX – Humanitarian Data Exchange data.humdata.org/organization/us-census-bureau

USAID – Spatial Data Repository spatialdata.dhsprogram.com/population-estimates